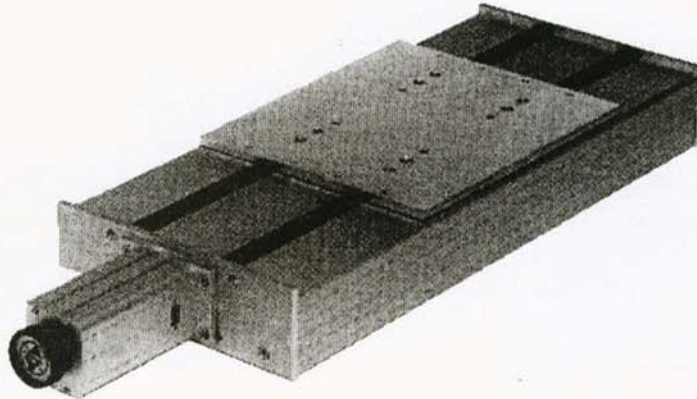


### FEATURES

- 30 x 250 mm base plate provides stability and large load capacity
- Home reference switch and far end limit switch with  $\pm 0.01$  mm repeatability
- Aluminum dust cover with Teflon lip seals provides protection against contaminants
- All models with stepper motor option feature 125 oz-in stepper motor, model HL2100M473030
- All models with servo motor option feature motor model H50R10-0242 with 500 line, line driver optical rotary encoder
- Features 2 patented double linear rails and 4 patented double bearing blocks
- Standard anti-backlash ball screw and nut, 16 mm diameter with 5 mm pitch
- Work surface is flat milled aluminum 300 x 250 x 9 mm with 8 drilled and tapped M6 mounting holes
- Optional ball screw is 16 mm diameter, 10 mm or 20 mm pitch



### HEAVY DUTY SLIDE SELECTION

**EXAMPLE:** To order a Heavy Duty Slide with Stepper Motor (S), 5 mm Pitch Ball Screw (B) & 300 mm Travel (0600), the Catalog Number is **HL31SBM602060005**

#### CATALOG NUMBER

HL31   M602

#### Motor Drive

- X No Motor
- V Servo Motor
- S Stepper Motor
- C Crank Handle

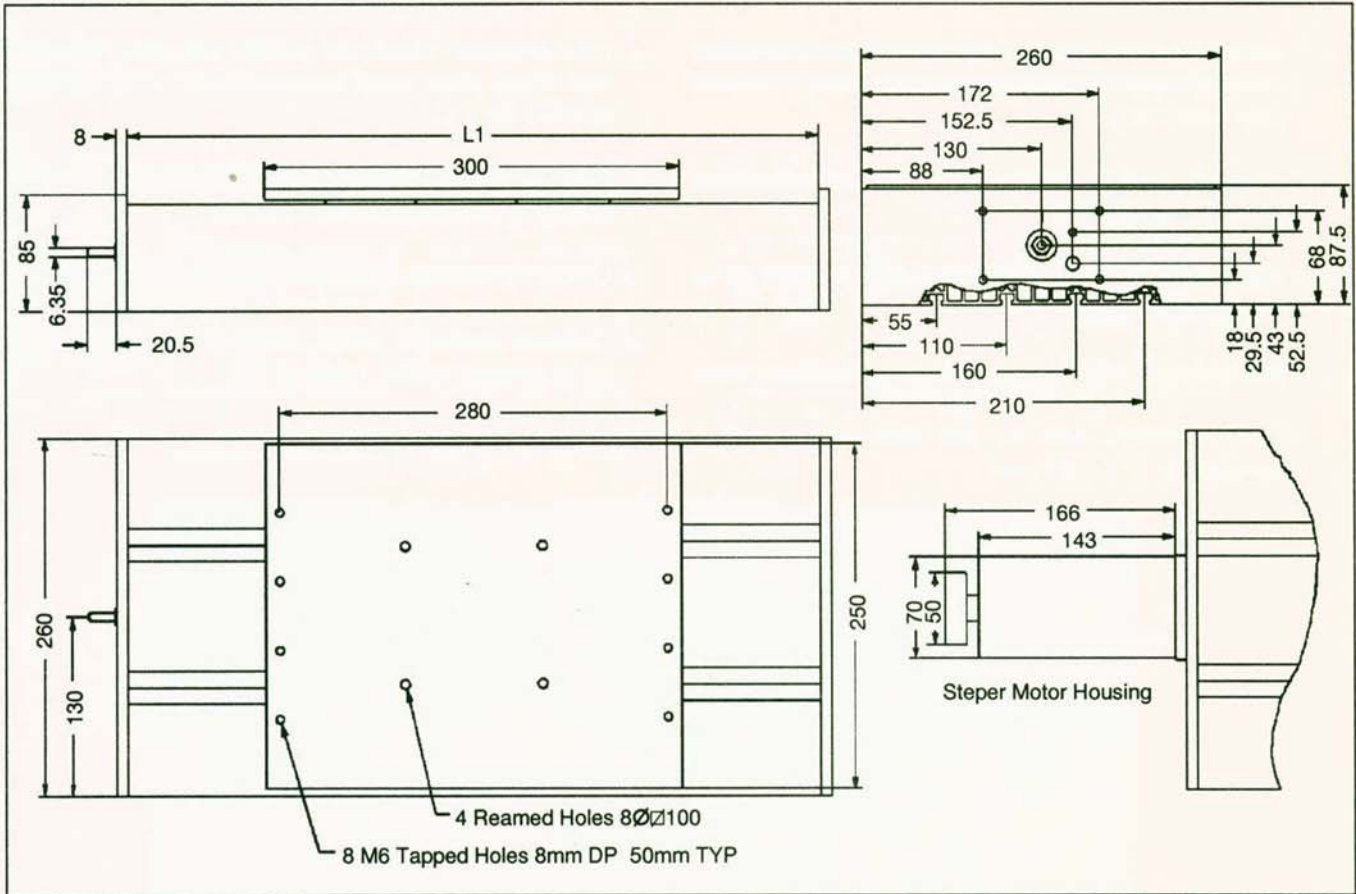
#### Screw Pitch

- 05 5 mm
- 10 10 mm
- 20 20 mm

#### Screw Type

- B Ball Screw
- X No Screw

Code	Length, L1 mm (in)	Travel mm (in)	Weight * kg (lb)
0400	400 (15.7)	100 (3.9)	12.7 (28)
0500	500 (19.6)	200 (7.8)	14 (31)
0600	600 (23.6)	300 (11.8)	15.4 (34)
0850	850 (33.4)	550 (21.6)	20 (44)
1000	1000 (39.3)	700 (27.5)	23 (51)
1100	1100 (43.3)	800 (31.4)	24 (53)
1250	1250 (49.2)	950 (37.4)	27.7 (61)
1350	1350 (53.1)	1050 (41.3)	29.5 (65)
1500	1500 (59.0)	1200 (47.2)	33 (73)



### SPECIFICATIONS

<b>Repeatability</b>	± 0.01 mm (± .0004 in)			
<b>Accuracy</b>	± 0.1 mm / 300 mm (± .004 in / 12 in)			
<b>Vertical Static Load Capacity</b>	113 kg (250 lb)			
Motor Drive	Ball Screw Pitch mm	Thrust Force at Low Speeds, kg (lb)	No Load Speed mm/sec (in/sec)	Resolution mm (in)
<b>Stepper Motor</b>	5	91 (200)	127 (5)	0.0125 (.0005)
	10	45 (100)	254 (10)	0.025 (.001)
	20	23 (50)	510 (20)	0.05 (.002)
<b>Servo Motor</b>	5	113 (250)	152 (6)	0.0025 (.0001)
	10	57 (125)	305 (12)	0.005 (.0002)
	20	28 (63)	610 (24)	0.01 (.0004)

**NOTES ON SPECIFICATIONS:** Stepper motor is model HL2100M473030 as described on page 136, operating in half step mode, with 4.5A / phase, 40V chopper driver. Servo motor is model H50R10-0242 as described on page 147, operating with 6A / 80V chopper amplifier and 500 line encoder operating in quadrature. These figures will, of course, vary with different loads, amplifiers and acceleration profiles provided by the controller.